



JAL 310 05.008.12-1

Musdi mit Fale

8x5,5



JAN 8 10.05.008 12 1/2

ILLINOIS

9x5 1/2



JAL BIO.05.009.12-3

8.5 x 6



JAC 310 01.009.124

Azle Lattilye Frembez
toplayıp getiriyor

39

8.5 x 6



JAC. BIO. 05.009.12-5

Jale, Menddi

Berlau?

39

8,5 x 6



JAL BK OF 009.12-6

39

8, T X 6



A 572

DL-510-05-009-12-7

2x5/3



JAC B10.05.009.12-8

00019

8, 5 46



JAL. BIO. 05. 009. 12. 9

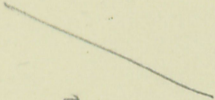
00019

8,5 X 6



JAL 1310.05.009.12.10

Agfo Lupex



WJ

Agfo Lupex

615 x 6

Agfo Lupex



Hoffman'ların Evi

Tamanıyla yanmaktan sale kurtardı.

U



DK. 010. 05. 009. 12-12

Berlin Hoffmannstraße
Zirkadenweg 70

358

P. 15 x 6



JAL. B19.05.009. 12-13

358

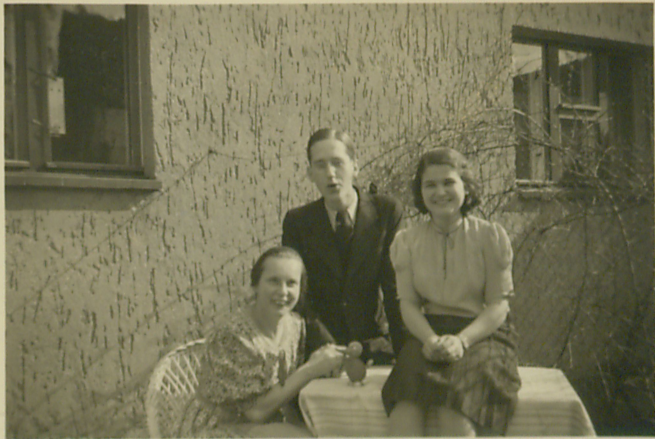
815 x 6



JAL-BIO.05.009.12-164

358

815 X 6



JAC. B10.05.009.12-15

358

815XC



An Elsas Hochkreit

Yale, Heidi Lotte, Vasi, Alice Schaffer,
Howard Elkinton, Lore Hafner,
Zsi.

Seal

Tingl

284

Photo-Hausmeister

815x6



Foto Hagemeister

B284

Seehe Tirol

8,5 x 6

JAC. 10.05.009.12-12



JAL-BIO.05.009.12-18

1893

221

1020



JAL DIA 03.009.12-19

Agosto

12-19



JAL. B. 10. 05. 009. 17. 20

1910

1910

12x9



JM. 810.05. 009. 12. 21

Brooklyn

Brooklyn

Brooklyn

11.5 x 6.5



JAC. BIO. OS. POG. 12-22

Handwritten text, possibly a signature or name, oriented vertically.



Si mud

Labbily

September 1971

Boğaziçi Üniversitesi

Arşiv ve Dokümantasyon Merkezi

Jale İnan Arşivi



JALBIO0500912